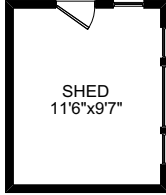
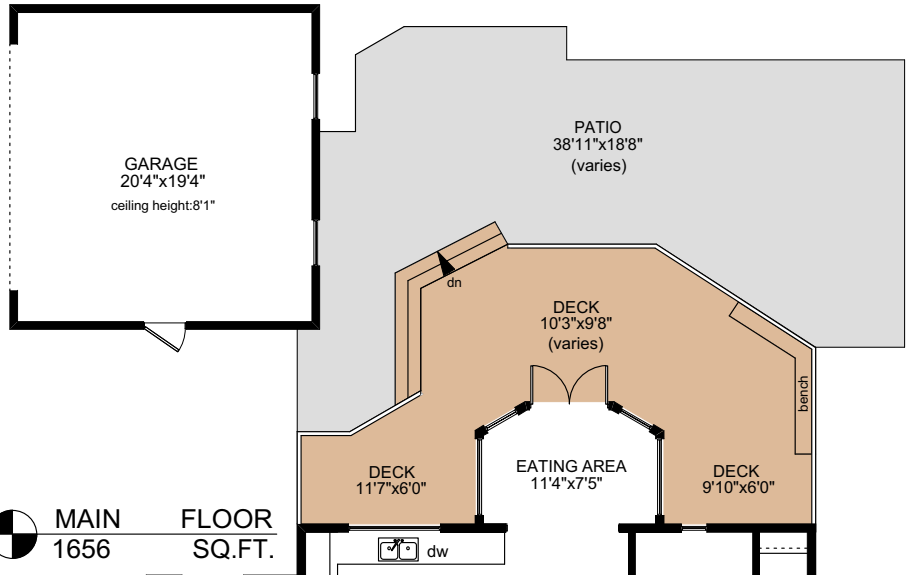


1023 ST. CHARLES STREET

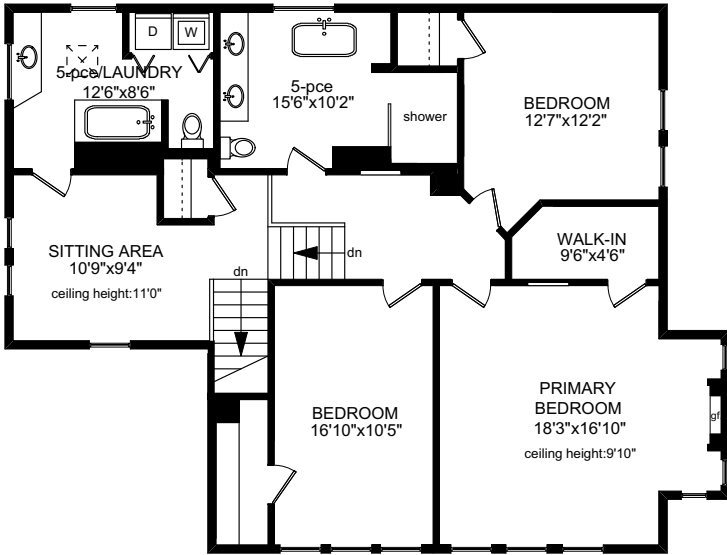
not shown in exact location



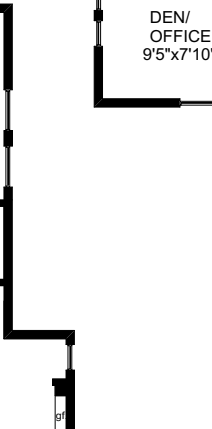
MAIN FLOOR
1656 SQ.FT.



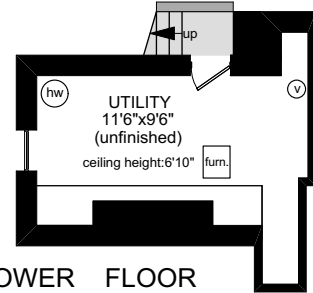
UPPER FLOOR
1410 SQ.FT.



2-pce
9'5"x2'7"

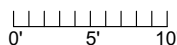


LOWER FLOOR
244 SQ.FT.



NOTE: The room name labels/sizes are for viewing reference only. They are not to be used for calculating total square footage.

	FINISHED SQ. FT.	UNFINISHED SQ. FT.	TOTAL SQ. FT.
MAIN	1656	0	1656
UPPER	1410	0	1410
LOWER	0	244	244
TOTAL	3066	244	3310
GARAGE	0	426	426
SHED	0	132	132
PATIO	0	615	615
DECK	0	388	388
PORCH	0	100	100



PREPARED FOR THE EXCLUSIVE USE OF
BRETT JONES OF NEWPORT REALTY

MEASURED ON: 05/02/22
DRAWING FILE: 18263

Tafe Measure VICTORIA, B.C.
Ph.2508838894
www.tafemeasure.com