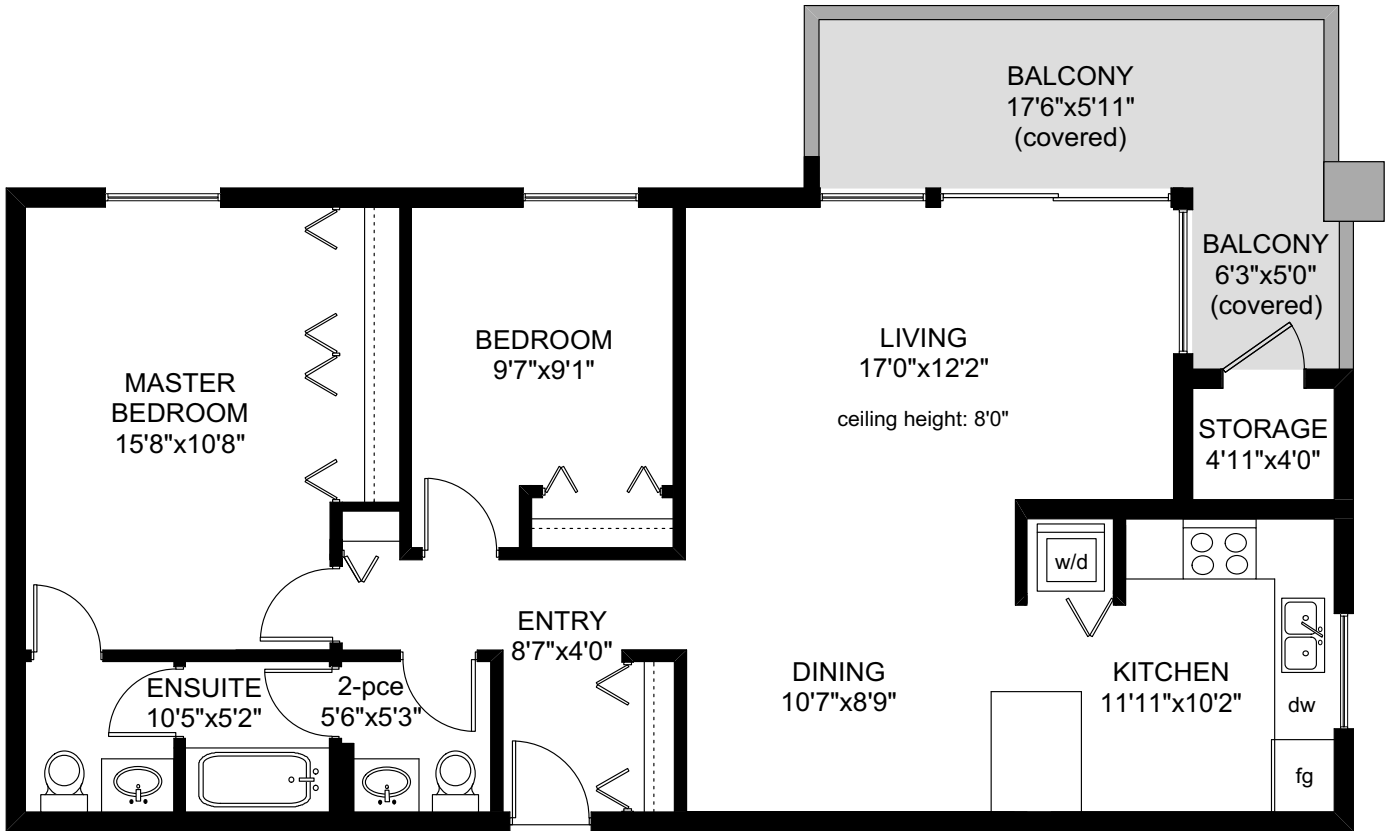
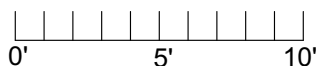
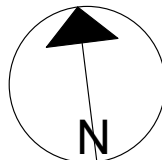


502 - 1026 JOHNSON STREET



UNIT 502
1106 SQ.FT

	FINISHED SQ. FT.	UNFINISHED SQ. FT.	TOTAL SQ. FT.
MAIN	950	0	950
STORAGE	0	25	25
BALCONY	0	131	131
TOTAL	950	156	1106



PREPARED FOR THE EXCLUSIVE USE OF
BRETT JONES OF NEWPORT REALTY

MEASURED ON: 11/20/19
DRAWING FILE: 17583

Tafe Measure VICTORIA, B.C.
Ph. 883.8894
www.tafemeasure.com