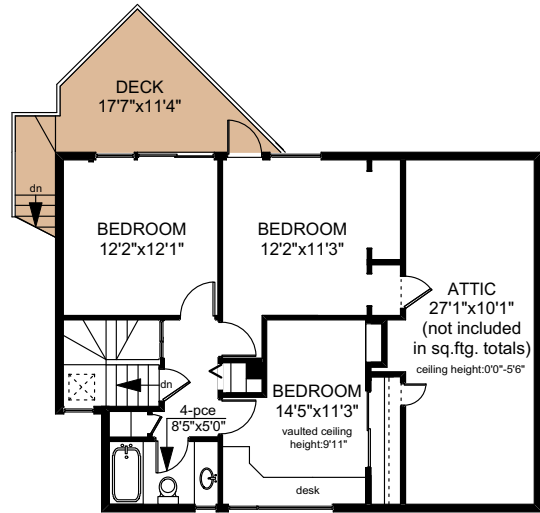
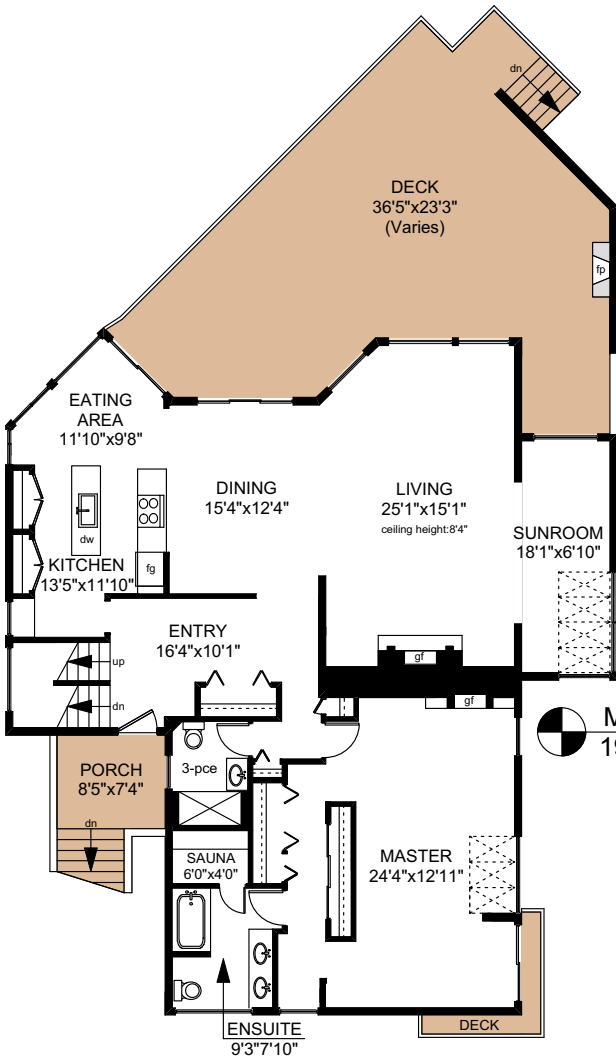
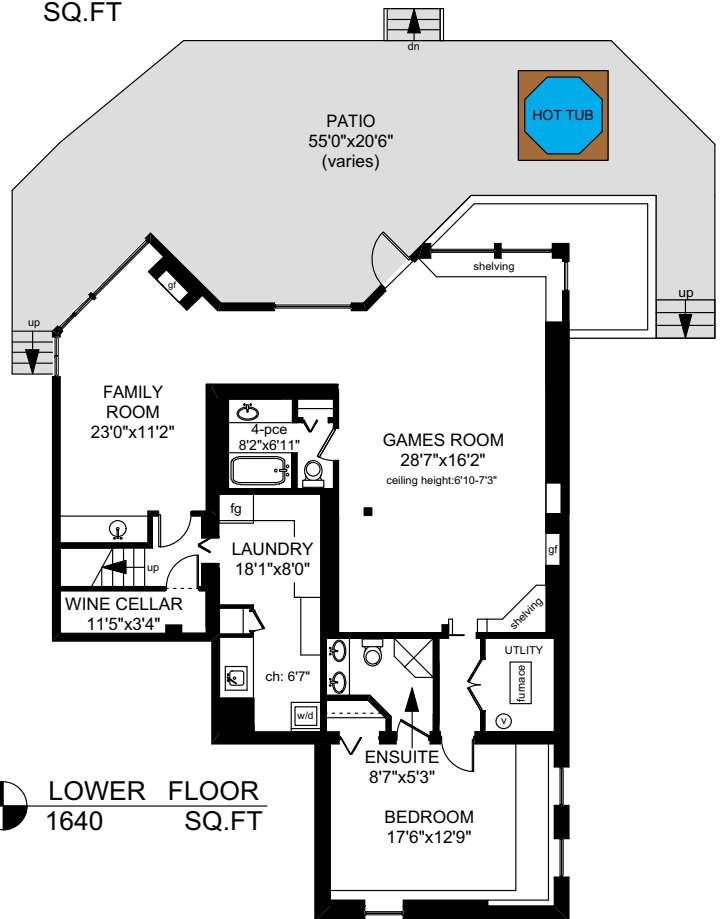


45 MAQUINNA STREET

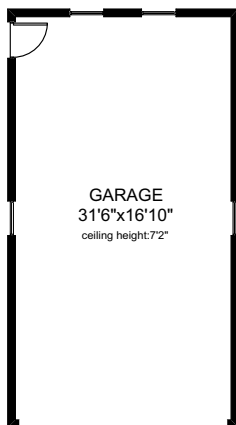
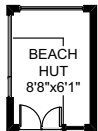


UPPER FLOOR
727 SQ.FT

MAIN FLOOR
1909 SQ.FT



LOWER FLOOR
1640 SQ.FT



	FINISHED SQ. FT.	UNFINISHED SQ. FT.	TOTAL SQ. FT.
MAIN	1909	0	1909
UPPER	727	0	727
LOWER	1640	0	1640
TOTAL	4276	0	4276
GARAGE	0	588	588
DECKS	0	847	847
PATIO	0	839	839
PORCH	0	62	62
BEACH HUT	0	69	69



0 5 10

PREPARED FOR THE EXCLUSIVE USE OF
BRETT JONES OF NEWPORT REALTY

MEASURED ON: 04/18/18
DRAWING FILE: 15611

Tafe Measure VICTORIA, B.C.
Ph. 883.8894
www.tafemeasure.com