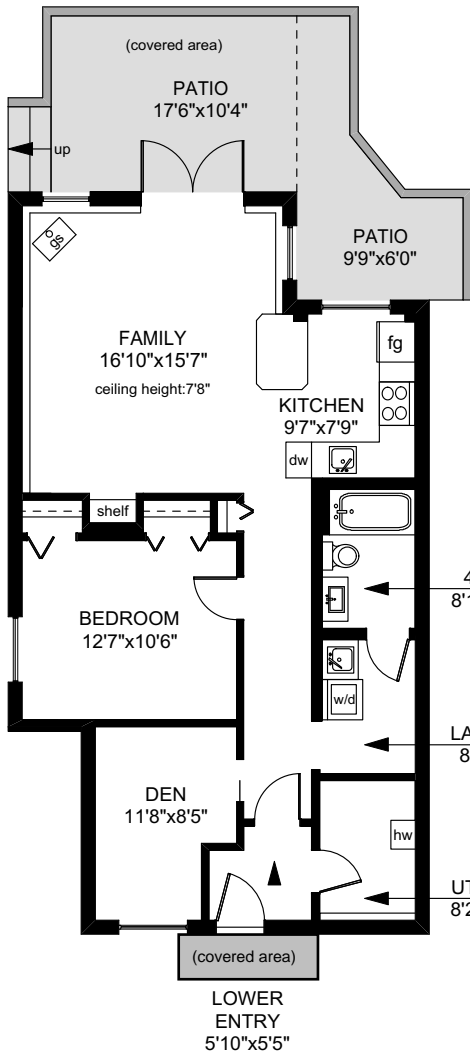
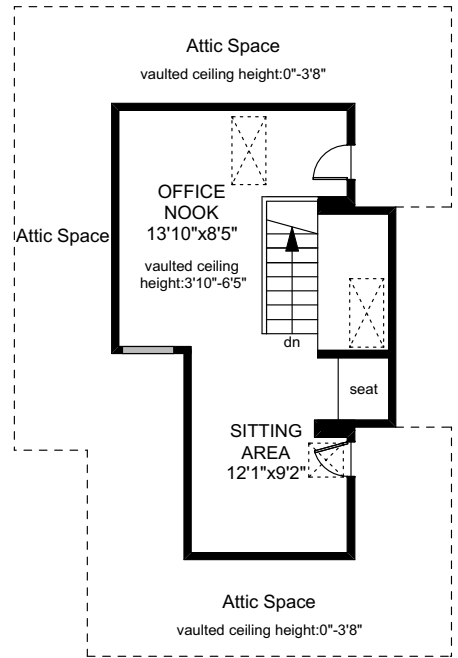
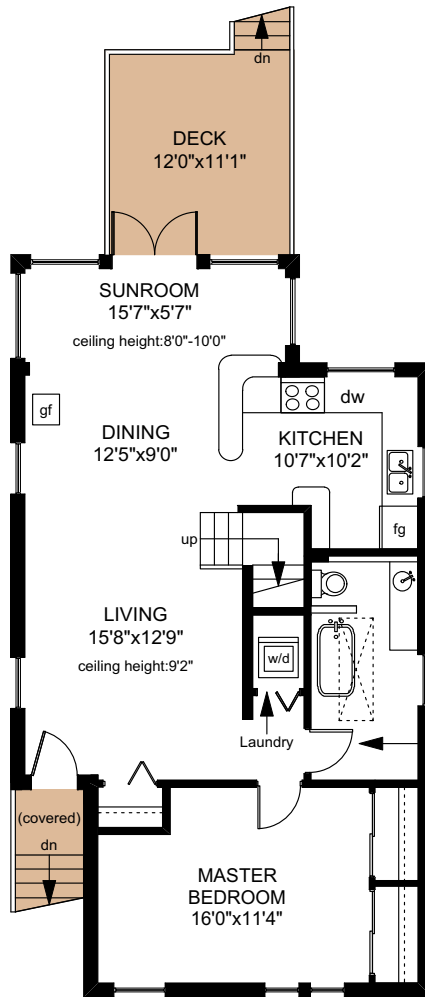
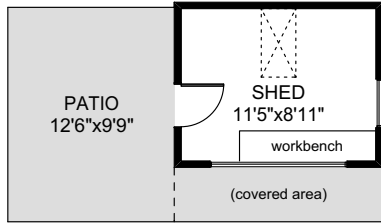


137 LADYSMITH STREET

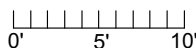
UPPER FLOOR
302 SQ.FT



MAIN FLOOR
972 SQ.FT

LOWER FLOOR
972 SQ.FT

	FINISHED SQ. FT.	UNFINISHED SQ. FT.	TOTAL SQ. FT.
MAIN	972	0	972
UPPER	302	0	302
LOWER	972	0	972
TOTAL	2246	0	2246
SHED	0	119	119
DECK	0	133	133
PATIO	0	407	407



PREPARED FOR THE EXCLUSIVE USE OF
BRETT JONES OF NEWPORT REALTY

MEASURED ON: 05/14/19
DRAWING FILE: 17436

Tafe Measure VICTORIA, B.C.
Ph. 883.8894
www.tafemeasure.com