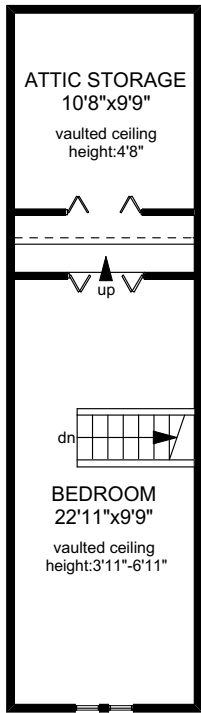
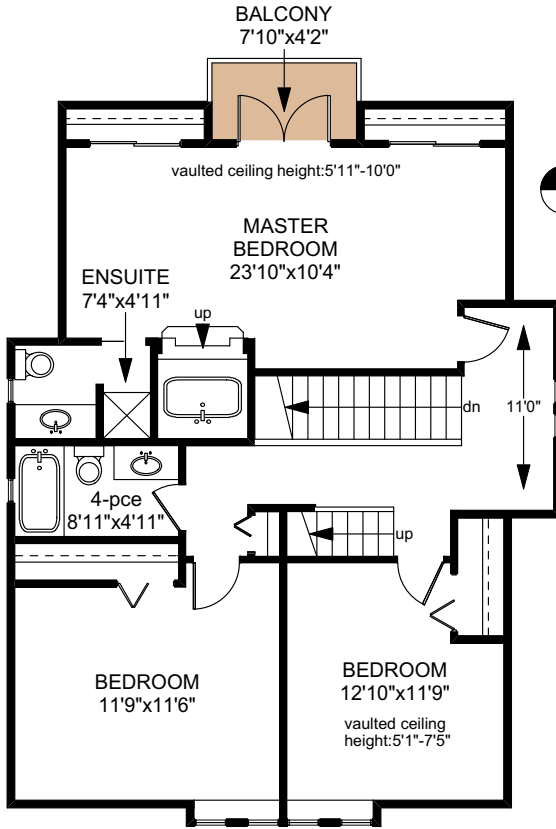


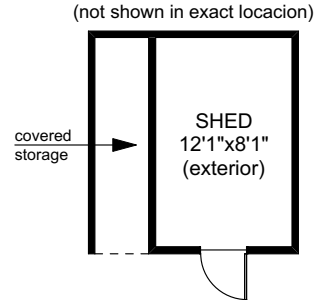
1235 GLYN ROAD



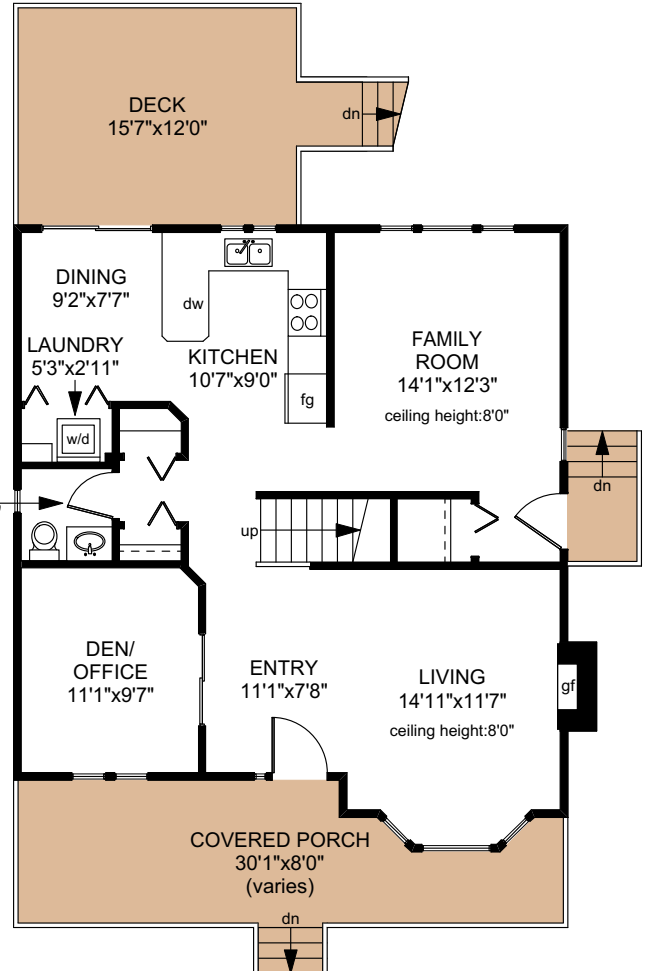
THIRD FLOOR
287 SQ.FT



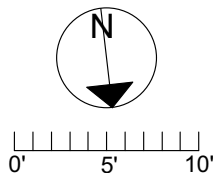
SECOND FLOOR
1040 SQ.FT



MAIN FLOOR
951 SQ.FT



	FINISHED SQ. FT.	UNFINISHED SQ. FT.	TOTAL SQ. FT.
MAIN	951	0	951
2nd FLOOR	1040	0	1040
3rd FLOOR	287	0	287
TOTAL	2278	0	2278
ATTIC	0	119	119
SHED	0	98	98
DECK	0	201	201
BALCONY	0	33	33
PORCH	0	193	193



PREPARED FOR THE EXCLUSIVE USE OF
BRETT JONES OF NEWPORT REALTY

MEASURED ON: 01/24/19
DRAWING FILE: 17364

Tafmeasure VICTORIA, B.C.
Ph. 883.8894
www.tafmeasure.com