



3520 UPPER TERRACE ROAD

Style and Sophistication in Uplands





What a gorgeous renovation to this pristine mid-century modern gem. Painstakingly transformed by award winning Maximilian Huxley Construction, this house captures the coolest essence of the 50s era while being completely modern in every important aspect from the mechanics to the sleek kitchen to the very functional family room.







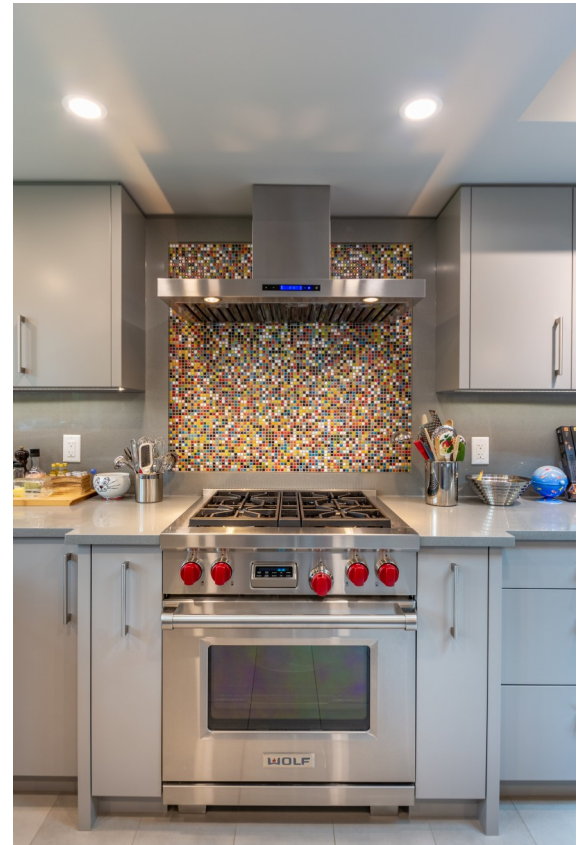


Vaulted ceilings and a very cool fireplace greet you as soon as you enter. Originally 4 small rooms, the main floor is now all open with a lovely dining room and living room featuring engineered walnut flooring and Italian designed and German manufactured pendant lights. There's lots of light from the many windows on the main floor as well as access to a large patio to enjoy the sun all day long.









The vaulted ceiling continues through to the amazing kitchen which was thoughtfully reconfigured with custom cabinets and quartz countertops. The finest appliance package includes a Wolf dual fuel range, a Sub Zero fridge, a Jenn Air wine fridge and Fischer Paykel Dish Drawers.







The family room floor was taken back to the studs and reconfigured to create a separate laundry area, new bathroom with custom cabinetry and den/bedroom. Fully wired, the family room makes a perfect media room and has access to one of the multiple patios. A custom made barn door nicely separates the family room from the rest of the house.



















Upstairs has 2 guest bedrooms with new, expanded windows which share a bathroom with new walnut flooring, custom cabinetry and lights from Murano, Italy.

There's also a palatial master suite with a spacious walk-thru closet and lovely ensuite bathroom featuring new skylights, custom mirrors and custom glass in showers.









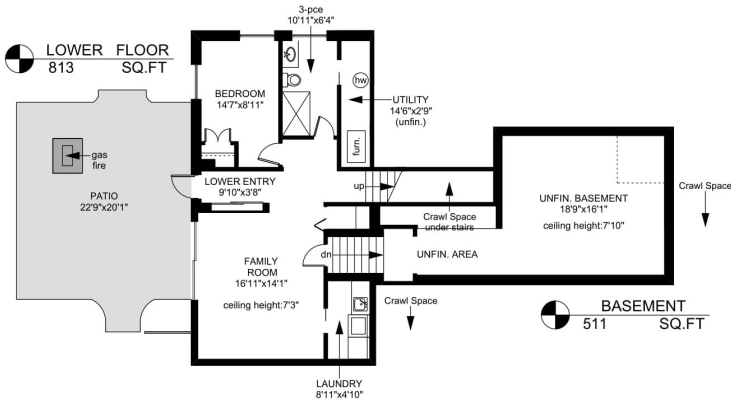
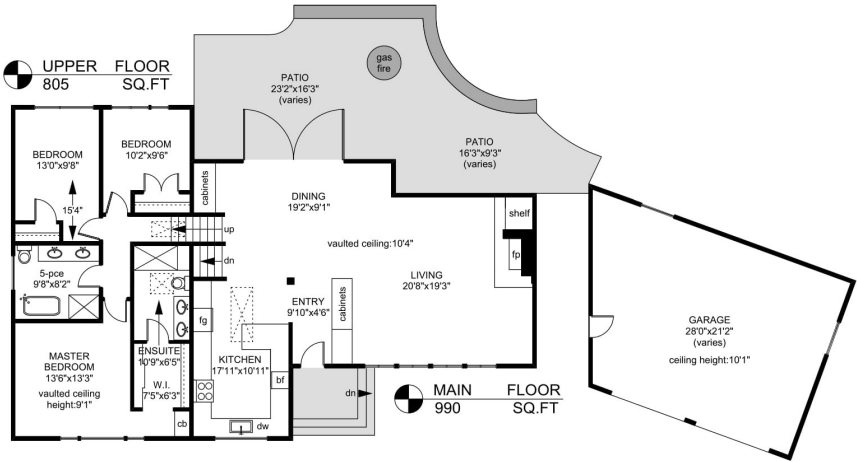


Throughout the home no expense was spared in the infrastructure of the home. All windows and exterior doors are fiberglass clad wood with multi-point locking. All new wiring, plumbing updated, high efficiency hot water tank installed, all insulation replaced, sound proofing between all rooms and floors installed , a replaced and expanded HVAC system and more was recently completed. There's even a new alarm system which you can connect to your mobile device and the blinds in the living room are WiFi enabled and can be controlled remotely.

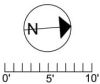
This home is perfection personified.



# 3520 UPPER TERRACE



	FINISHED SQ. FT.	UNFINISHED SQ. FT.	TOTAL SQ. FT.
MAIN	990	0	990
UPPER	805	0	805
LOWER	749	64	813
BASEMENT	0	511	511
TOTAL	2544	575	3119
GARAGE	0	634	634
PATIOS	0	1094	1094



PREPARED FOR THE EXCLUSIVE USE OF  
BRETT JONES OF NEWPORT REALTY

MEASURED ON: 08/23/18  
DRAWING FILE: 17258

Tafe Measure  
VICTORIA, B.C.  
Ph. 883.8894  
www.tafemeasure.com





BRETT  
JONES

Newport  
Realty  
CHRISTIE'S  
INTERNATIONAL REAL ESTATE

For a private viewing call  
Brett Jones at 250.385.2033  
[www.brettjones.ca](http://www.brettjones.ca)