
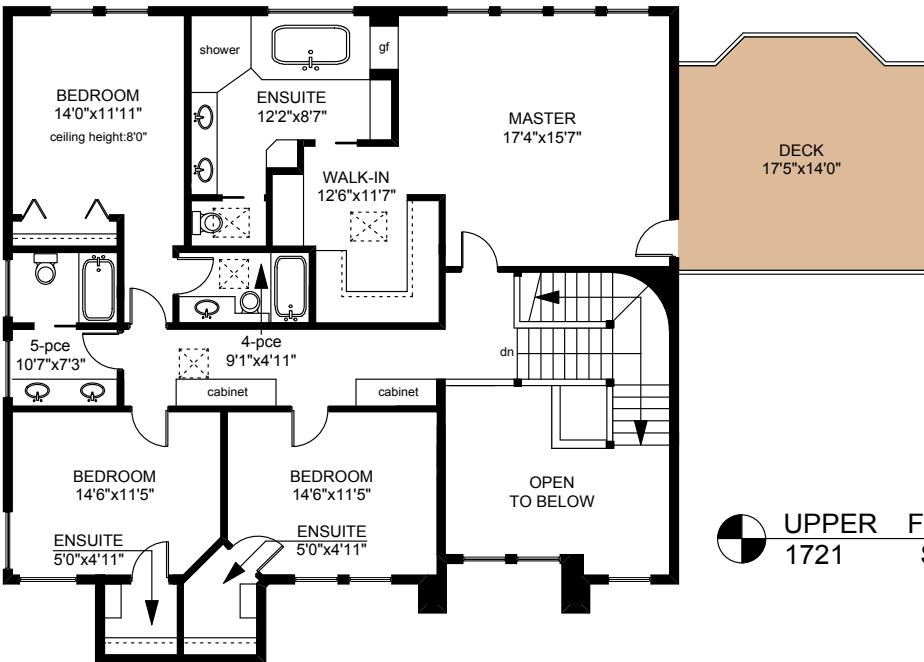



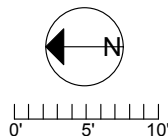
# 928 WALKING STICK LANE


**MAIN FLOOR**  
 2620 SQ.FT




**UPPER FLOOR**  
 1721 SQ.FT

	FINISHED SQ. FT.	UNFINISHED SQ. FT.	TOTAL SQ. FT.
MAIN	2620	0	2620
UPPER	1721	0	1721
<b>TOTAL</b>	<b>4341</b>	<b>0</b>	<b>4341</b>
GARAGE	0	534	534
DECKS	0	364	364
PATIO	0	765	765



PREPARED FOR THE EXCLUSIVE USE OF  
 BRETT JONES OF NEWPORT REALTY

MEASURED ON: 09/25/15  
 DRAWING FILE: 13103

**Tafe Measure** VICTORIA, B.C.  
 Ph. 883.8894  
 www.tafemeasure.com